



# **Health & Safety Policy Statement**

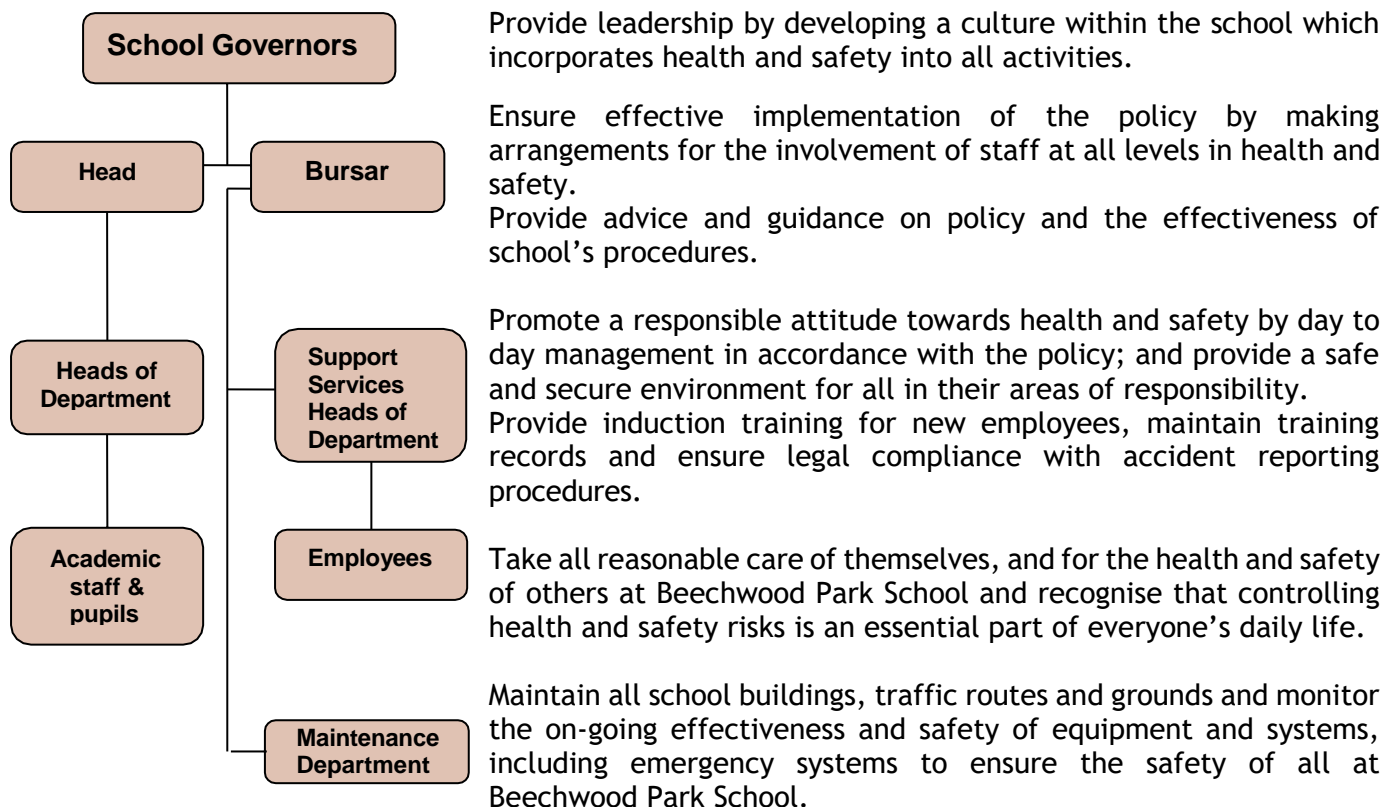
## **for the whole School including EYFS**

Policy revised by	Anne-Marie Ridler
Last Review	January 2023
SLT Review Period	2 years
Next SLT Review Due	September 2023
Governor Review Period	2 years
Governing Committee	Full Governing Body
Last Governor Review	December 2022
Next Governor Review Due	December 2024

Our policy is to provide and maintain safe and healthy working conditions, equipment and systems of work for all our employees, and to provide such supervision as they need for this purpose, in accordance with legislation (Health and Safety at Work Act 1974 and regulations made under that Act) as well as guidance from DfE ([Health & Safety: responsibilities and duties for schools \(2018\)](#)) and [HSE](#). We also accept our responsibility for the Health and Safety of pupils, guests, visitors and contractors on the school's premises and when on off-site activities elsewhere.

We are committed to achieving high standards, hence it follows that minimising risk to people and property is inseparable from all other school objectives. We encourage the active participation of all staff in the achievement of our safety goals and have established a Health and Safety Committee to facilitate this.

The allocation of duties for safety matters to implement this policy is set out below:



The detailed arrangements for carrying out this policy are set out in the Beechwood Park School Health & Safety Manual, which is available on Sharepoint under [Policies/Bursary/Health&Safety](#).

The Bursar keeps our policy and associated procedures up to date. To ensure this, she will review the policy and the way in which it operates as necessary and at least every two years.

Mark Hammond  
Chair  
9 January 2023

Maureen Cussans  
Interim Head  
9 January 2023

Anne-Marie Ridler  
Bursar  
9 January 2023